

we can help you find meaningful employment

- Over 2000 Success Stories
- Socially Responsible Employers
- Personalised Service
- Professional Staff

Please visit:

www.workability.org.au



We are located at:

**1 Brewer Street
PERTH WA 6000**

Near Members Equity Stadium (formerly Perth Oval) on the corner of Lord and Brewer

let us help

For Candidates and Clients

Matt Davey

Client Services Manager

P: 08 9228 9999 M: 0439 998 552

E: matt.davey@workability.org.au

For Employers

Maria Lloyd-Jones

Senior Marketing Manager

P: 08 9228 9999 M: 0448 799 913

E: maria.lloyd-jones@workability.org.au

For Capital Gift Giving & Sponsorship

Michael Riou

Chief Executive Officer

P: 08 9228 9999 M: 0421 345 008

E: michael.riou@workability.org.au

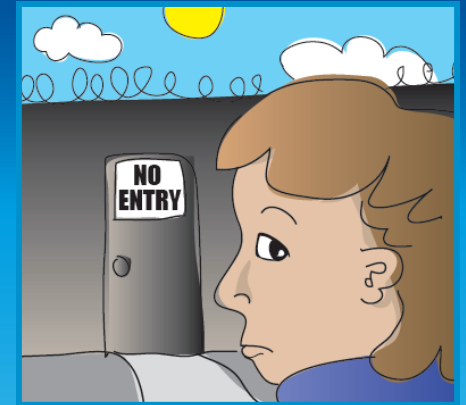


www.workability.org.au

Tel: +61 (0) 8 9228 9999

Workability Incorporated as Em-Tech 1988

ABN 41 775 691 792



Facing barriers to employment?

CLIENT GUIDE

Workability
Matching ~ people ~ abilities ~ work

Workability understands: The services and support you deserve, the results you demand.

We know that life can get difficult for people facing barriers to employment.

At times you need to talk to someone who knows what it's like to feel stressed or uncertain.

Workability understands your needs and can help you with practical solutions.

At all times, Workability will be there for you.

Am I able to use Workability's services?

Workability provides specialist assistance to job seekers with disabilities, illness or injury who require ongoing support to find and maintain employment. Please ring us if you:

- √ Have a permanent (or likely to be permanent) disability
- √ Require support for more than six months after placement in employment
- √ Are unhappy with your current employment network provider
- √ Are indigenous and would like support to gain meaningful employment

What can Workability do for me?

Workability can offer you a range of services.

We will work with you to help you figure out what your needs are. Workability will:

- √ Discuss your employment and transport needs and preferences for workplace location
- √ Organise work experience
- √ Provide fun experiences such as life skills training
- √ Hold great activities like the weekly Coffee Club
- √ Provide one-on-one support and assistance
- √ Assist you to find out more about apprenticeships, traineeships and courses
- √ Provide computer training and help you write job application letters and resumes
- √ Accompany you to job interviews and meetings

Workability understands

Workability will not treat you like a number. We know how important it is to feel respected.

We will work with you to build self confidence and esteem through programs like Prepare for Work, Job Activity Group and Computer Training.

We have developed a highly successful 'whole of life approach' to assist our clients to meet their needs and achieve their goals.

We can provide vocational training, mentoring, and transitional work opportunities for Clients.

We'll help you to fulfill your potential through opportunities to study, make friends and receive one-on-one support.

"I made the right decision to come to Workability. I have been away from the workforce for a very long time and wouldn't have known how to get a job myself. Lucky you were there to help me. Keep up the good work."

Derek (client)

"The most important thing is that Workability provides for me is that my needs and goals are supported and that we work together to achieve those goals ... and that I'm being listened to."

Bill (client)